

The background features a complex geometric pattern of thin grey lines connecting various points, forming a network of triangles and polygons. Some points are solid black dots, while others are small open circles. The overall color scheme is light grey with red accents for the logo and text.

 **adatech**

---





Our aim is to increase our market share throughout the world by continuously developing and growing with all interested parties in order to provide the highest quality products in the sector.



# Our company

is a company that produces turnkey solutions in the **electric, water, and renewable energy sectors** mainly in the **Oil & Natural Gas** sector.





# Sphere of Activity

Our engineers have extensive knowledge in the design of:  
Engineering, Design and Site Supervision of Control System for Reducing and Metering Stations.

- Project Management,
- Design & Engineering,
- Electrical assembly of electrical equipment and wiring, Industrial Applications, (RMS, Combined Power Stations, etc.)
- Supply and installation of DCS and PLC control systems,
- Supply and installation of SCADA and RTU applications,
- Communication infrastructure, (MODBUS TCP, OPC UA, etc.)
- The fire detection system,
- Lighting supply and installation,
- UPS systems,
- Supply and assembly cables for Industrial Applications, (RMS, Combined Power Stations etc.)
- Supply and installation of heating systems,
- Supply and installation of lightning rod systems,
- Supply and assembly of cables for and energy supplies,
- Field Installation,
- Test and Commissioning,
- Entrainments removal from fluids and gases,
- Fluids and gases separation systems,
- Fuel gases conditioning systems,
- Reducing and metering stations,
- Packages.





**Our company provides services to its customers in the fields of**

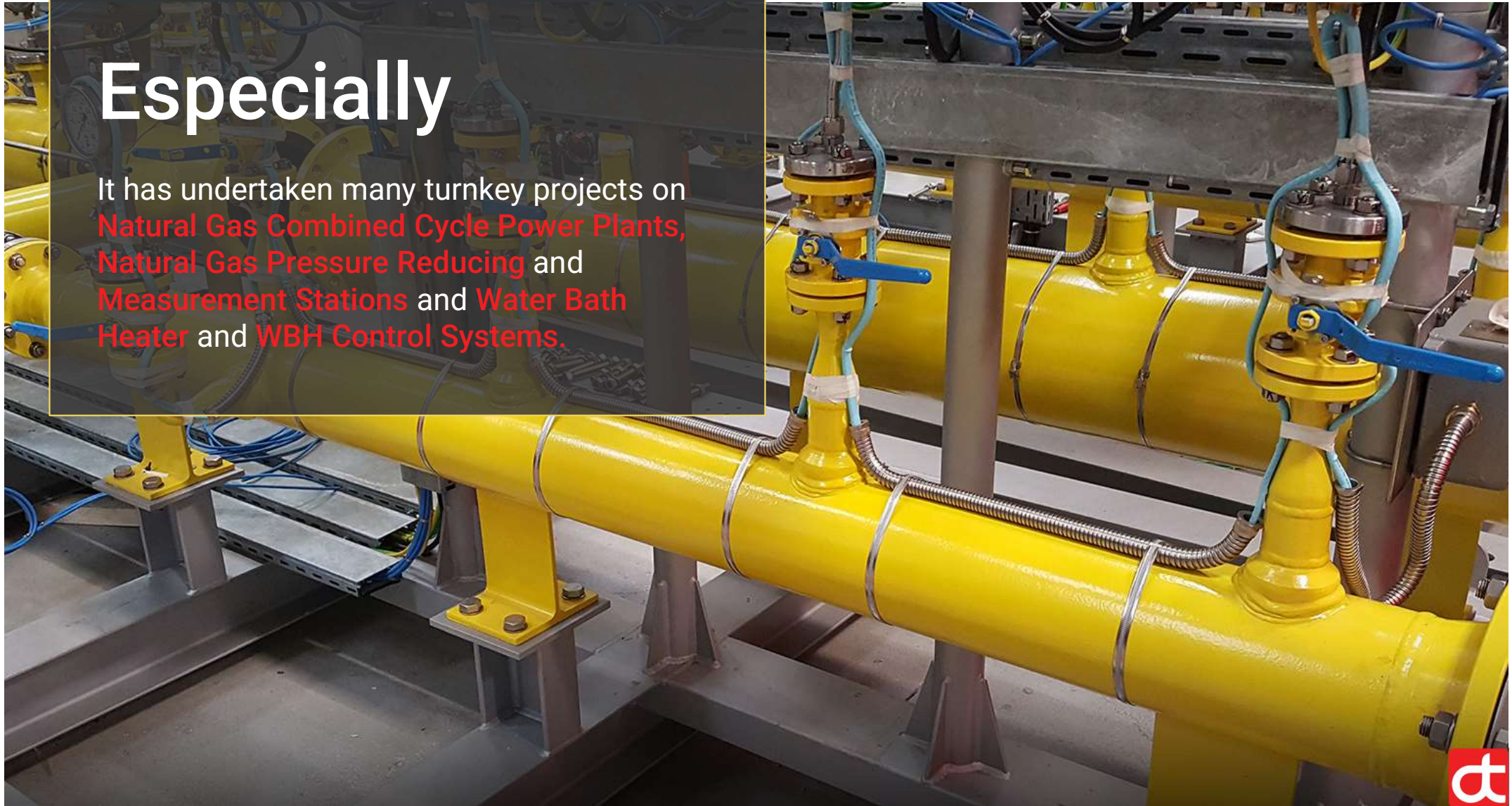
- installation of industrial automation systems,
- commissioning,
- scada applications,
- data transmission and processing,
- maintenance and service.





# Especially

It has undertaken many turnkey projects on  
Natural Gas Combined Cycle Power Plants,  
Natural Gas Pressure Reducing and  
Measurement Stations and Water Bath  
Heater and WBH Control Systems.



# Thanks to its high-quality standards and specialized personnel



in the control and automation of **Gas Processing, Gas Metering and Gas Heating systems** in accordance with **International Standards**, our company provides follow-up of projects at all stages from the very beginning of the project to the development process of the related services and the delivery of turnkey systems to the field.





## FILTRATION & SEPARATION

- Dry gas filters,
- Separator filters,
- Coalescers,
- Vane type separators,
- Multitube separators,
- Wire mesh separators,
- Three phase separators,
- Marine applications.

## HEATING

- Water bath indirect heaters
- Oil bath indirect heaters
- Shell & tube heat exchangers
- Direct electric heaters
- Hot water boiler package





## **GAS CONDITIONING PACKAGES**

- Packages,
- Turnkey plants.

## **PIPELINES**

- Pig launchers and receivers,
- Quick opening closure,
- Auxiliary equipments.





## Our company

performs the installation of exproof systems in industrial automation applications, in accordance with ATEX levels, within the framework of international standards and takes into account the relevant standards.





### **Our company**

will be happy to provide support and service to your company in engineering, consultancy and maintenance issues that you may need in industrial automation with solution partners such as **ABB**, **Honeywell** and **Forain**.

# ABB

## Honeywell

## Forain

## **IGNIS TRACE**





**Below are the main topics on which we can cooperate.**

**We can provide a full engineering package, commissioning and startup services for these units**

- Turnkey Pressure Reducing and Measuring Station Mechanical equipment and automation systems. Here, all cable, junction box and panel and panel materials from the equipment in the station to the automation panel are included. Again, automation system communication system, SCADA software and PLC software are made by our company,

- Indirect Water Bath Heaters,

- Natural gas filtration solution for high-pressure systems,

- Fuel Gas Conditioning Skids,

- Natural Gas High-Pressure Vessels,

- Testing, commissioning and maintenance services of Flow Computer, Ultrasonic meter, turbine meter, orifice meter, etc. equipment used in pressure reduction and measurement stations,

- Pipeline and Pressure reducing and measuring stations Cathodic protection systems,

- Providing technical consultancy services on projects,

- RMSA stations automation and connecting to SCADA Centers,

- Installation and management of odorization unit.



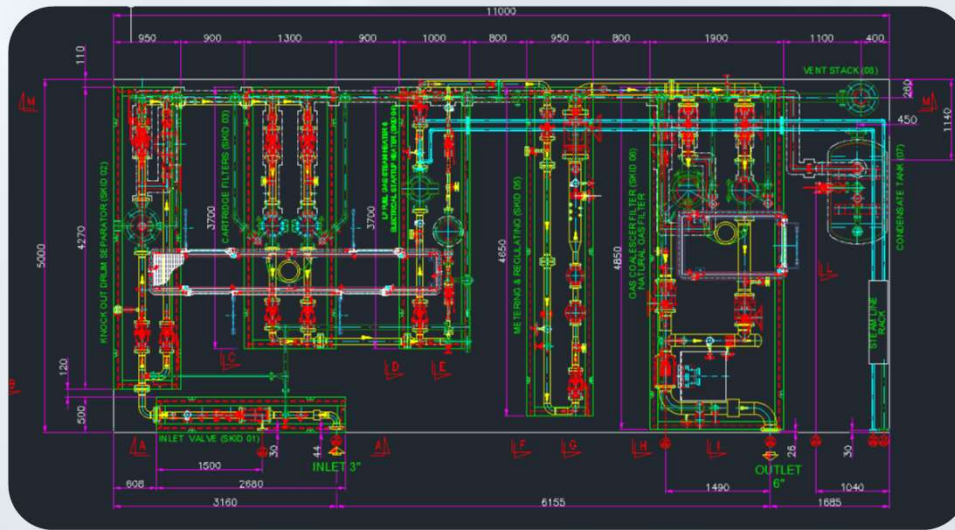
# ONGOING PROJECTS

**Projects Name:** Urea Fertilizer Project.

**Projects Description:** Engineering, Design and Site Supervision of Project.

**Year:** 2021-2022

**End User:** Gemlik Gübre Sanayii A.Ş.





**Projects Name:** Botaş Saros FSRU Project.

**Projects Description:** Engineering, Design and Site Supervision of Natural Gas Fiscal Metering Station Control System.

**Year:** 2021-2022

**End User:** BOTAŞ - Boru Hatları İle Petrol Taşıma Anonim Şirketi.



**Projects Name:** Kuzey Marmara Underground Gas Storage Expansion Phase III.

**Projects Description:** Engineering, Design and Site Supervision of Natural Gas Fiscal Metering Station Control System.

**Year:** 2021-2022

**End User:** BOTAŞ - Boru Hatları İle Petrol Taşıma Anonim Şirketi.



**Projects Name:** Tuzgölü Underground Gas Storage Project.

**Projects Description:** Engineering and Design.

**Year:** 2020-2022

**End User:** ICA - İçtaş Astaldi Joint Venture.



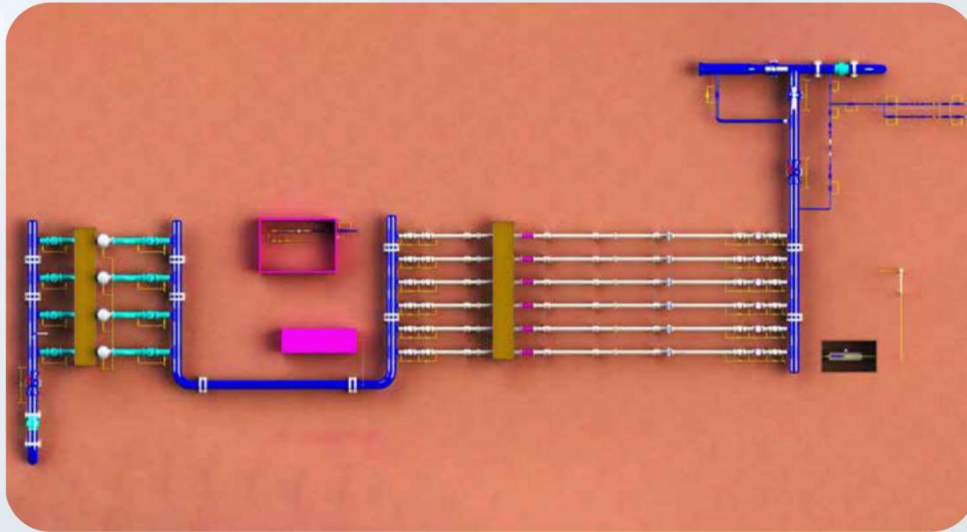


**Projects Name:** Batı Karadeniz Gazı Ölçüm İstasyonu Projesi.

**Projects Description:** Engineering, Design and Site Supervision of Project.

**Year:** 2021-2022

**End User:** BOTAŞ - Boru Hatları İle Petrol Taşıma Anonim Şirketi.



**Projects Name:** Kuzey Marmara Startup Heater.

**Projects Description:** Engineering, Design and Site Supervision of Project.

**Year:** 2022-2023

**End User:** BOTAŞ - Boru Hatları İle Petrol Taşıma Anonim Şirketi.

